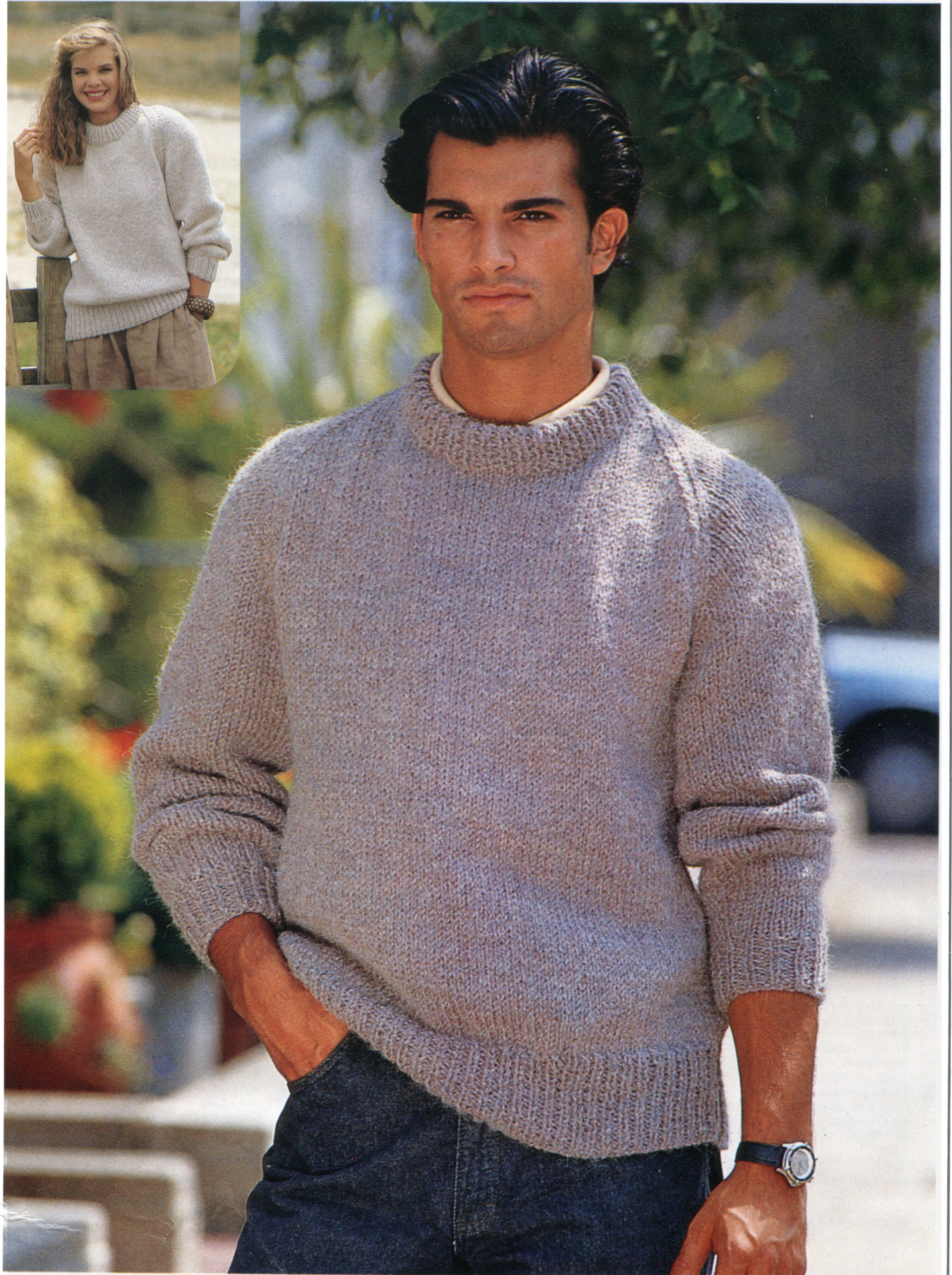


Wendy Orinoco *Chunky*

FREE



Easy Knit

76-107cm. (30-42ins.)

HIS AND HER CLASSIC SWEATERS

In Wendy Chunky

Instructions given for 76 cm. (30 inch) Bust/Chest, larger sizes given in brackets. Where only one figure is given this applies to all sizes.

**EASY
KNIT**

**Knitted in Orinoco
Shades 569 Siesta
570 Amapa**

MATERIALS AND MEASUREMENTS

To Fit Bust/Chest Sizes	76 30	81 32	86 34	91 36	97 38	102 40	107 42	cm. ins.
Actual Measurements	88.5 34¾	94 37	100.5 39½	103 40½	108.5 42¾	114.5 45	120.5 47½	cm. ins.
Wendy Orinoco Chunky (50g.)	11	11	12	12	13	13	14	Balls.
Wendy Ascot Chunky (50g.)	12	12	13	14	15	15	16	Balls.
Wendy Family Choice Chunky (50g.)	13	13	14	14	15	15	16	Balls.
2 — 5½ mm. (U.K. 5 — U.S.A. 9) and 2 — 6½ mm. (U.K. 3 — U.S.A. 10½) Milward Knitting Needles.								
Length from Back of Neck	61 24	61 24	62 24½	63.5 25	64.5 25½	64.5 25½	66 26	cm. ins.
Sleeve Seam	43 17	43 17	44.5 17½	45.5 18	45.5 18	45.5 18	47 18½	cm. ins.

Please note that the limitations of the printing process mean that the actual colour will not always precisely match the colours in the photograph.

IMPORTANT

Use only the Wendy yarn specified. We cannot accept responsibility for an imperfect garment if any other brand is used. It is essential to work to the tension stated. The quantities of yarn stated are based on average requirements and are therefore approximate.

ABBREVIATIONS

K. — Knit; P. — Purl; st(s). — stitch(es); st.st. — stocking stitch; inc. — increase; dec. — decrease; rept. — repeat; beg. — beginning; alt. — alternate; tog. — together; sl. — slip; sl.1 — slip one; p.s.s.o. — pass slipped stitch over; 0 — No stitches or rows to be worked in that particular size; cm. — centimetres; ins. — inches.

TENSION

It is important to check your tension before commencing the garment.

14 sts. and 20 rows to 10 cm. (4 ins.) over st.st. on 6½ mm. Needles.

If there are too many stitches to 10 cm., then your tension is tight and you will need to change your needle to a larger size. If there are too few stitches to 10 cm., then your tension is loose and you will need to change your needle to a smaller size.

BACK

Using 5½ mm. Needles, cast on 57 (59, 63, 67, 71, 75, 77) sts.

1st Row — K.1, * P.1, K.1, rept. from * to end.

2nd Row — P.1, * K.1, P.1, rept. from * to end. Rept. the last 2 rows for 10 cm. (4 ins.) finishing on a 1st Row.

Next Row (Inc. Row) — Rib 4 (1, 3, 3, 2, 2, 3), inc. in next st., * rib 15 (10, 10, 19, 21, 22, 13), inc. in next st., rept. from * to last 4 (2, 4, 3, 2, 3, 3) sts., rib to end. 61 (65, 69, 71, 75, 79, 83) sts.

Change to 6½ mm. Needles.

Continue in st.st. (1 row knit, 1 row purl) until work measures 43 cm. (17 ins.) from commencement finishing on a P. row.

Shape Armholes

Cast off 3 (3, 3, 3, 3, 4, 4) sts. at beg. of next 2 rows.

Work 4 rows.

Next Row — K.1, sl.1, K.1, p.s.s.o., K. to last 3 sts., K.2tog., K.1.

Work 3 rows.

Dec. 1 st. at each end of the needle as before on the next and every following 4th row until 37 (41, 47, 49, 55, 59, 63) sts. remain.

(81, 86, 91, 97, 102, 107) cm. (32, 34, 36, 38, 40, 42) inch sizes only

Dec. 1 st. at each end of the needle on every following alt. row until 39 sts. remain.

All Sizes

Work 2 (0, 0, 0, 0, 0, 0) rows finishing on a K. row.

Shape Back Neck

Next Row — P.30 (31, 31, 31, 31, 31, 31), sl. the last 23 sts. just worked onto a st. holder, P. to end.

Continue on the last set of sts. as follows: — Dec. 1 st. at armhole edge on the next and following 0 (2nd, 2nd, 2nd, 2nd, 2nd, 2nd) row **at the same time** dec. 1 st. at neck edge on every row until 2 sts. remain finishing on a P. row.

K.2tog. Fasten off.

With right side facing, rejoin yarn to remaining sts. at neck edge.

Work as instructions given for other side.

FRONT

Work exactly as instructions given for Back until 43 (47, 49, 51, 51, 51, 51) sts. remain.

Work 2 (2, 0, 2, 0, 0, 0) rows finishing on a K. row.

Shape Front Neck

Next Row — P.27 (29, 30, 31, 31, 31, 31), sl. the last 11 sts. just worked onto a st. holder, P. to end.

Continue on the last set of sts. as follows: —

(86) cm. (34) inch size only

Dec. 1 st. at neck edge only on the next 2 rows.

All Sizes

Dec. 1 st. at armhole edge on the next and every following 4th (4th, 2nd, 2nd, 2nd, 2nd, 2nd) row **at the same time** dec. 1 st. at neck edge on every row until 3 (5, 5, 5, 5, 5) sts. remain.

All Sizes

Work 2 (0, 0, 0, 0, 0, 0) rows.

Keeping neck edge straight, dec. 1 st. at armhole edge on the next and every following 0 (2nd, 2nd, 2nd, 2nd, 2nd, 2nd) row until 2 sts. remain.

Work 3 (1, 1, 1, 1, 1, 1) rows finishing on a P. row.

K.2tog. Fasten off.

With right side facing, rejoin yarn to remaining sts. at neck edge.

Work as instructions given for other side.

SLEEVES (Both Alike)

Using 5½ mm. Needles, cast on 27 (29, 29, 29, 31, 31, 31) sts.

Work 6.5 cm. (2½ ins.) in rib as given for Back finishing on a 1st Row.

Next Row (Inc. Row) — Rib 2 (1, 1, 0, 1, 1, 1), inc. in next st., * rib 2 (4, 4, 2, 3, 3, 3), inc. in next st., rept. from * to last 3 (2, 2, 1, 1, 1, 1) sts., rib to end. 35 (35, 35, 39, 39, 39, 39) sts.

Continue in st.st., inc. 1 st. at each end of the needle on the 5th and every following 6 (6, 6, 6, 6, 4)th row until 47 (55, 57, 53, 61, 47, 53) sts. are on the needle.

76 (91, 102, 107) cm. 30 (36, 40, 42) inch sizes only

Inc. 1 st. at each end of the needle on every following 8 (8, 6, 6)th row until 53 (59, 63, 65) sts. are on the needle.

All Sizes

Continue without further inc. until Sleeve measures 43 (43, 44.5, 45.5, 45.5, 45.5, 47) cm. 17 (17, 17½, 18, 18, 18, 18½) ins. from commencement finishing on a P. row.

Shape Top

Cast off 3 (3, 3, 3, 3, 4, 4) sts. at beg. of next 2 rows.

Work 2 (0, 0, 0, 0, 0, 2) rows.

Next Row — K.1, sl.1, K.1, p.s.s.o., K. to last 3 sts., K.2tog., K.1.

Work 1 row.

Dec. 1 st. at each end of the needle as before on the next and every following alt. row until 5 sts. remain finishing on a P. row.

Sl. sts. onto a safety pin. Break off yarn.

PRESSING

With wrong side facing, pin out all pieces to measurements given. Press as instructions given on ball band.

MAKING UP

Pin sleeves into position leaving left back raglan open, sew in by backstitching.

Neckband

With right side facing, using 5½ mm.

Needles, K.5 sts. from left sleeve top, pick up and K.15 sts. down left front neck, K.11 sts. from front neck st. holder, pick up and K.16 sts. up right front neck, K.5 sts. from right sleeve top, pick up and K.3 sts. down right back neck, K.23 sts. from back neck st. holder, pick up and K.3 sts. up left back neck. 81 sts.

Commencing on a 2nd Row, work 9 cm. (3½ ins.) in rib as given for Back.

Cast off loosely in rib.

Join left back raglan by backstitching, join neckband by top sewing.

Fold neckband in half onto wrong side and sl.st. into position.

Join side and sleeve seams by backstitching omitting rib, join rib by top sewing.

Press seams.

Our Knitting Bureau will gladly give you any assistance or advice on Wendy designs if queries are accompanied by a Wendy or Peter Pan ball band and a stamped addressed envelope.

CARTER & PARKER LTD., GUISELEY, YORKS.